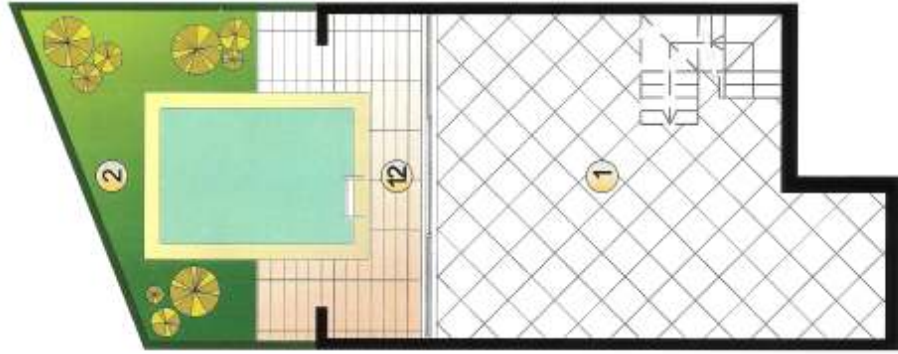




# TAVIRA TERRACES - MARLIN



- 1. Salão de Jogos / Games Room - 42,20 m<sup>2</sup>
- 2. Jardim / Garden
- 12. Terraço / Terrace - 13,20 m<sup>2</sup>



- 3. Sala / Living / Dining - 23,25 m<sup>2</sup>
- 4. Cozinha / Kitchen - 10,40 m<sup>2</sup>
- 5. W.C. / Toilet - 3,20 m<sup>2</sup>
- 11. Área Estacionamento / Parking Place 20,40 m<sup>2</sup>
- 13. Terraço / Terrace - 17,20 m<sup>2</sup>



- 6. Quarto / Bedroom - 10,50 m<sup>2</sup>
- 7. Quarto / Bedroom - 10,20 m<sup>2</sup>
- 8. Quarto / Bedroom - 10,58 m<sup>2</sup>
- 9. W.C. / Toilet - 4,30 m<sup>2</sup>
- 10. W.C. / Toilet - 2,00 m<sup>2</sup>
- 14. Terraço / Terrace - 12,00 m<sup>2</sup>

**Cave / Basement Plan**

**R/C / Ground Floor Plan**

**1º Andar / 1st Floor Plan**

# TAVIRA TERRACES - MARLIN

Apresentamos o nosso mais recente empreendimento composto de quatro vivendas V3 com piscina individual.

Localizado em zona elevada, em Tavira, a 20 km de Espanha e 30 km do Aeroporto de Faro.

Acabamentos de qualidade numa arquitectura elegante e tradicional.

Projectadas para habitações de Férias ou residências permanentes, são certamente um excelente investimento, cuja valorização, estamos certos, será uma constante.

*We are presenting our latest development. Four Terrace houses / Three Bedrooms with swimming pool each.*

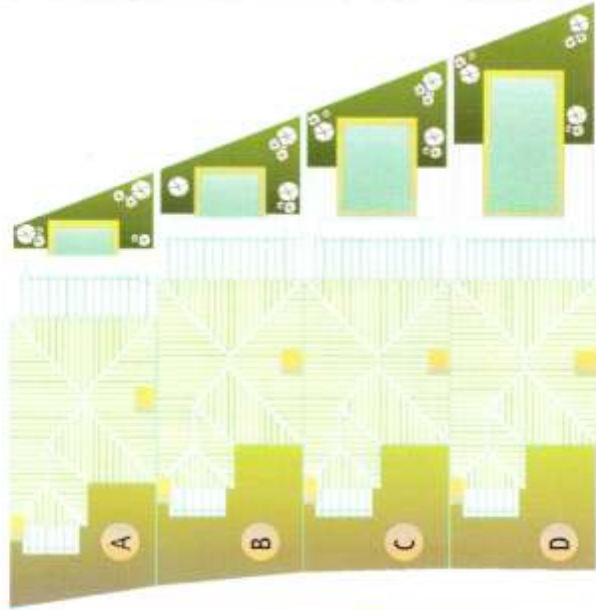
*Located on a hill facing the most picturesque, old town of Tavira in eastern Algarve.*

*20 km from Spain and 30 km from Faro Airport.*

*High quality finishing's and elegant vernacular architect's design. Villas close to golf courses, tennis courts and ocean beaches.*

*Near the Railway Station and 8km from the main motorway that crosses Algarve from East to West.*

*Excellent "Villas" for vacation or permanent residence. A world built with harmony, good access to any city in Algarve and Spain, with beautiful views over the surroundings and the ocean.*



- A - LOTE / PLOT 29 - 165,50 m<sup>2</sup>
- B - LOTE / PLOT 28 - 168,55 m<sup>2</sup>
- C - LOTE / PLOT 27 - 189,55 m<sup>2</sup>
- D - LOTE / PLOT 26 - 198,55 m<sup>2</sup>

Área de Construção 167,75 m<sup>2</sup>  
Construction Area 167,75 m<sup>2</sup>

## Planta Geral / General Roof Plan



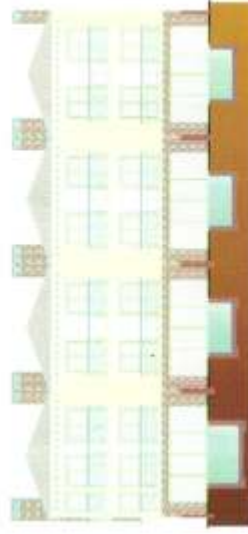
**Custódio Fernandes, Lda.**

CONSTRUCOES

Rua Almirante Cândido dos Reis nº 239  
8500-318 TAVIRA • ALGARVE - PORTUGAL  
Tel./Fax 281 323 293 • Tlm. 917 216 856



**Alçado Oeste / West Elevation**



**Alçado Este / East Elevation**

## Alçados / Elevations

